

Manuela de Sena

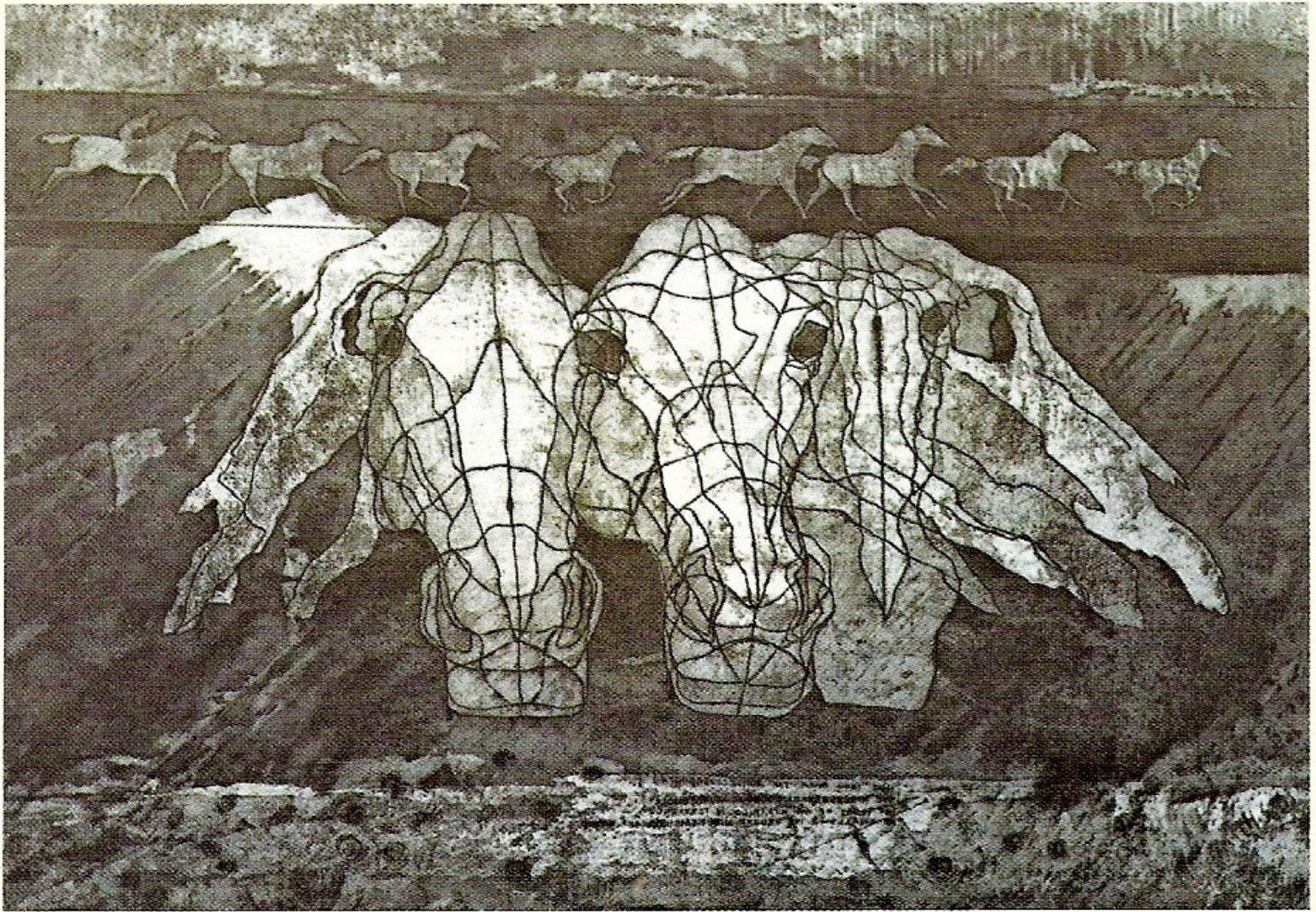


THE HARVEST OF A QUIET EYE

Artist Portfolio

fapc_sena@yahoo.com

The EQUUS Project.



1. Equus – Hast thou given the horse strength?

Etching on zinc metal plate, 56 x 76 cm, 1982-1983



Printmaking:
the Equus project

Theme worked on
between
1982 and 2000

2. Riders
Etching &
aquatint on zinc,
6 x 9 cm



4. Equus – Eyes, He is Everywhere.
Etching, aquatint & texture transfer on zinc plate,
40 x 50 cm, 1984



3. Two is One
Etching on zinc,
6 x 9 cm



5. Bozkachi.



7. Polo n° 6

DRAWINGS



6. Bozkachi.

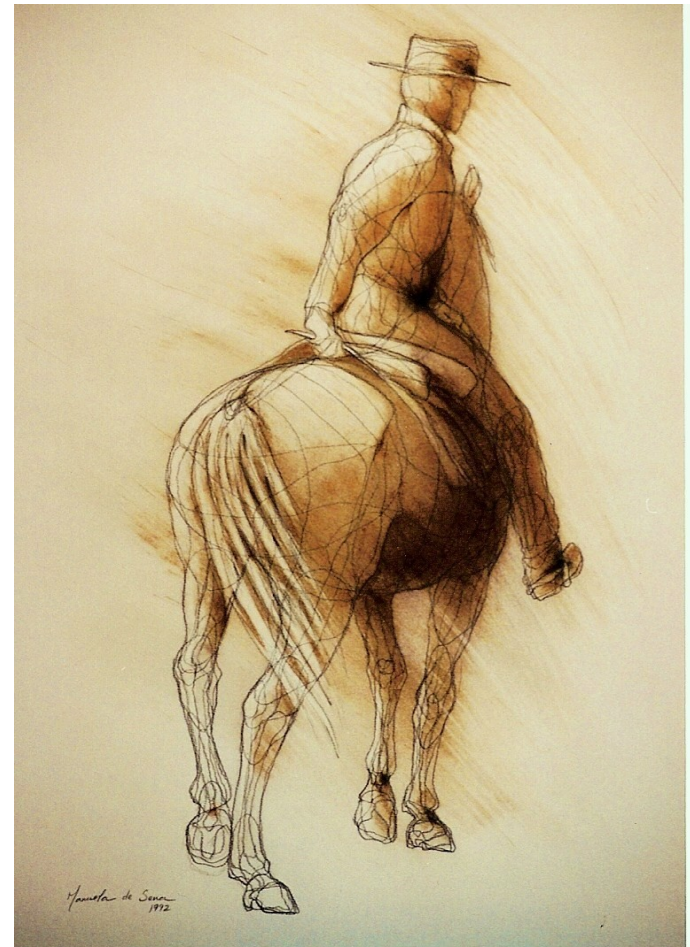
The EQUIDIA project

Mixed media on Arches paper, 50 x 65 cm, 1987-88

EQUIDIA



8. Polo n° 29
Mixed media on Arches paper, 56 x 76 cm, 1991



9. Golega Rider
Conte crayon and pastel on Arches, 50 x 65 cm, 1992

PORTRAITS



10. Camille Claudel – Go to sleep but not to rest
Mixed media on Arches paper, 50 x 65 cm, 1985



11. Hemingway – See and tell
Mixed media on Arches handmade paper, 50 x 65 cm, 1986



PORTRAITS

12. Amy and Caroline

13. David – April in Brussels

Pastel drawings on Canson paper,
50 x 65 cm, 1986-87





Project: Perpetual Vision – urban images

14. The Harvest of a Quiet Eye
Pastel drawing on Canson paper, 50 x 65 cm, 1986



15. Fleeting Glaze
Pastel drawing on Canson paper, 50 x 65 cm, 1986



Project: Perpetual Vision – urban images

16. Glass – Les Halles
Pastel drawing on Canson paper, 50 x 65 cm, 2000



17. Call Trap
Pastel drawing on Canson paper, 50 x 65 cm, 1986



Urban images : Shops in Paris

Series of drawings done between 1983 and 1986.

18. L'Etameur

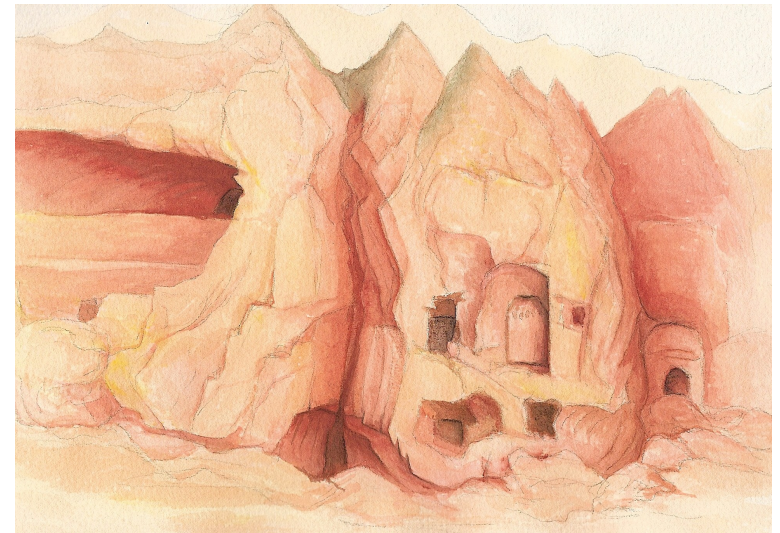
19. The photographer's new place

Talens pastel on Canson grey paper, 50 x 65 cm



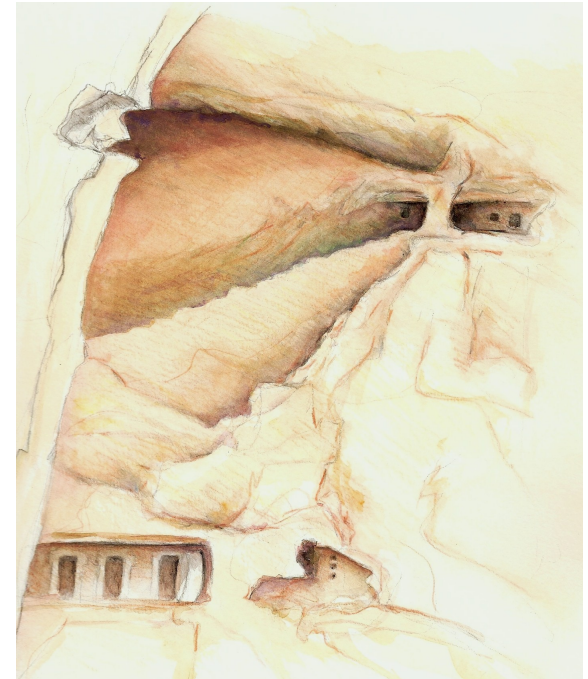


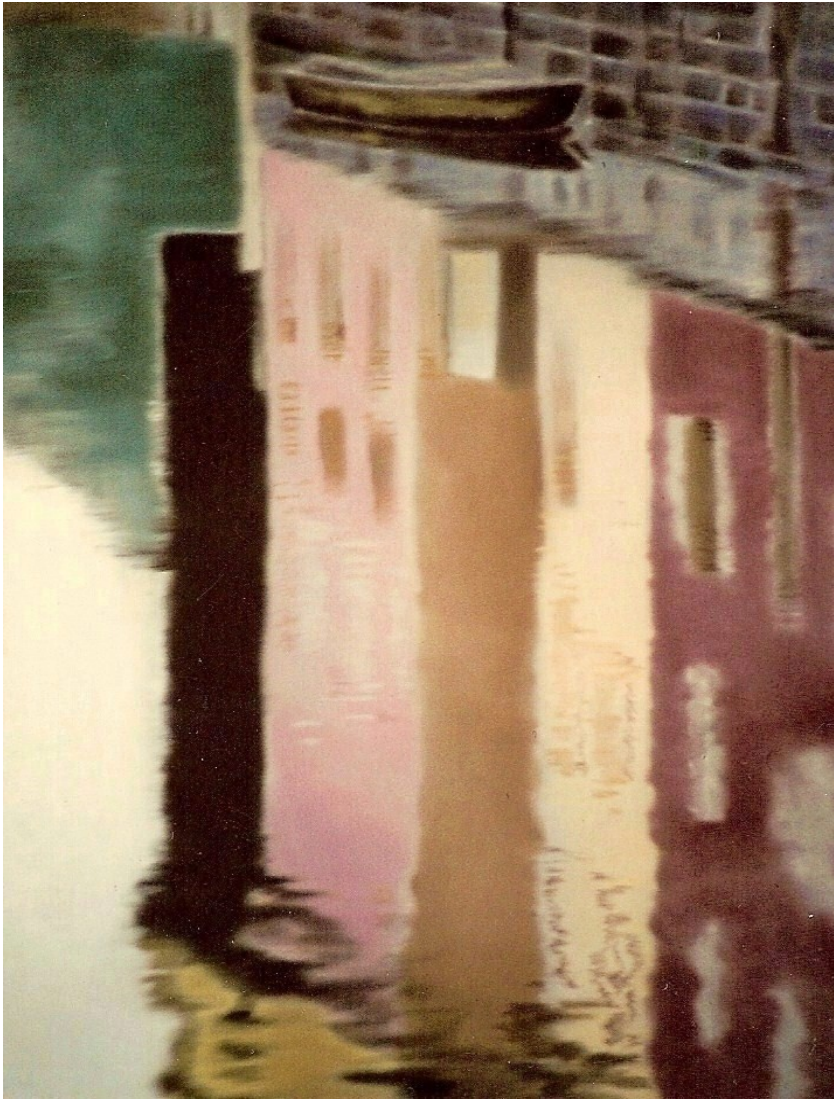
Urgup 20
22



Zelve 21
23

Landscapes
done on a trip
to Turkey, 1993.
Pencil & watercolor,
24 x 30 cm





Theme : Water reflections

24. Strasbourg n° 2 – Little France

Talens pastel on grey Canson paper, 50 x 65 cm, 1987-89



25. Strasbourg n° 3



FIGURE Projects.

26. W10 – Whispers, the unheard song
Pastel and acrylic on Arches paper, 50 x 65 cm, 1990



27. W16 – Whispers, ...and in the silence only the creak is heard
Pastel and acrylic on Arches paper, 50 x 65 cm, 1990

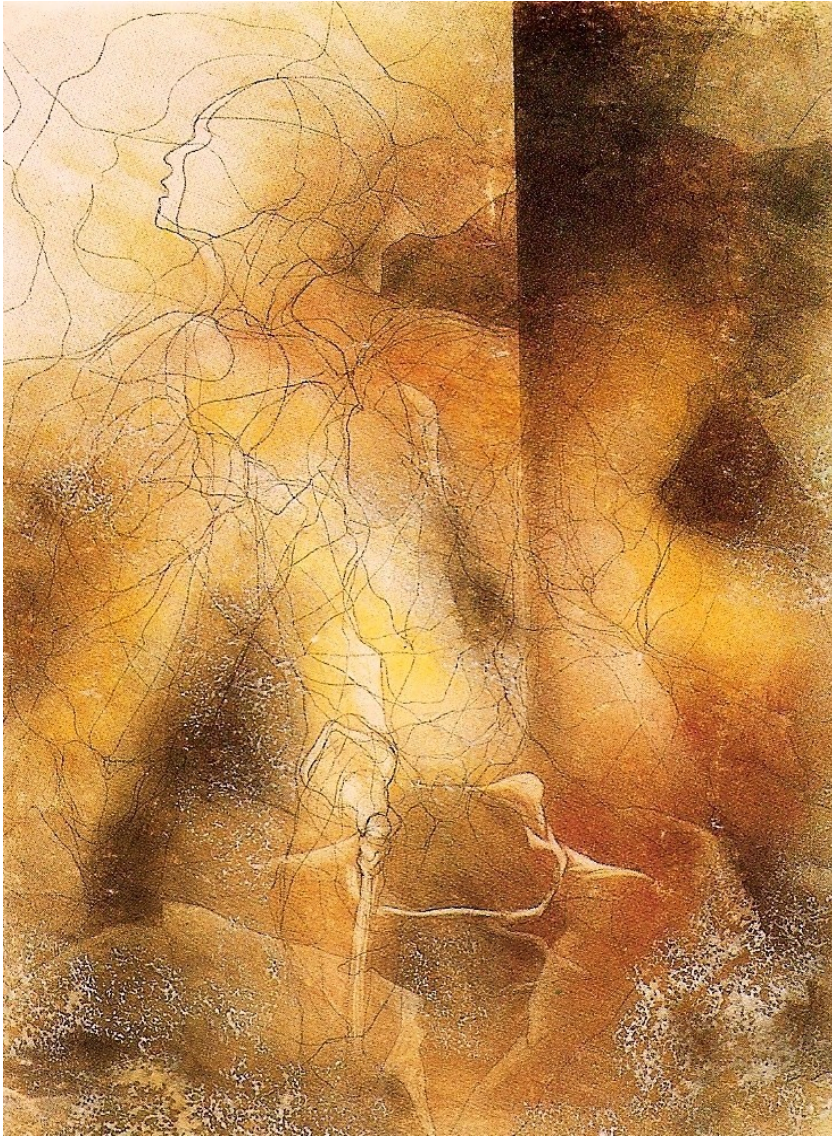
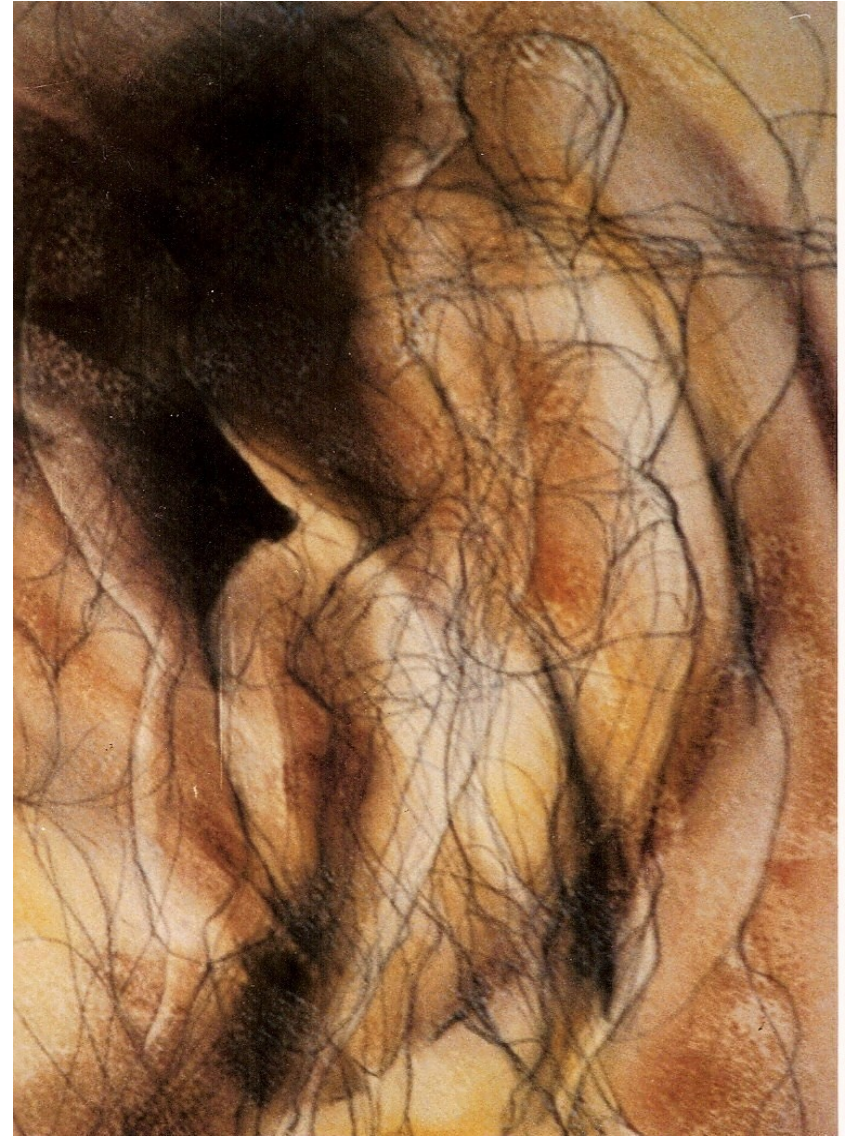


Figure projects

28 Ode
Mixed media on Arches, 50 x 65 cm, 1991

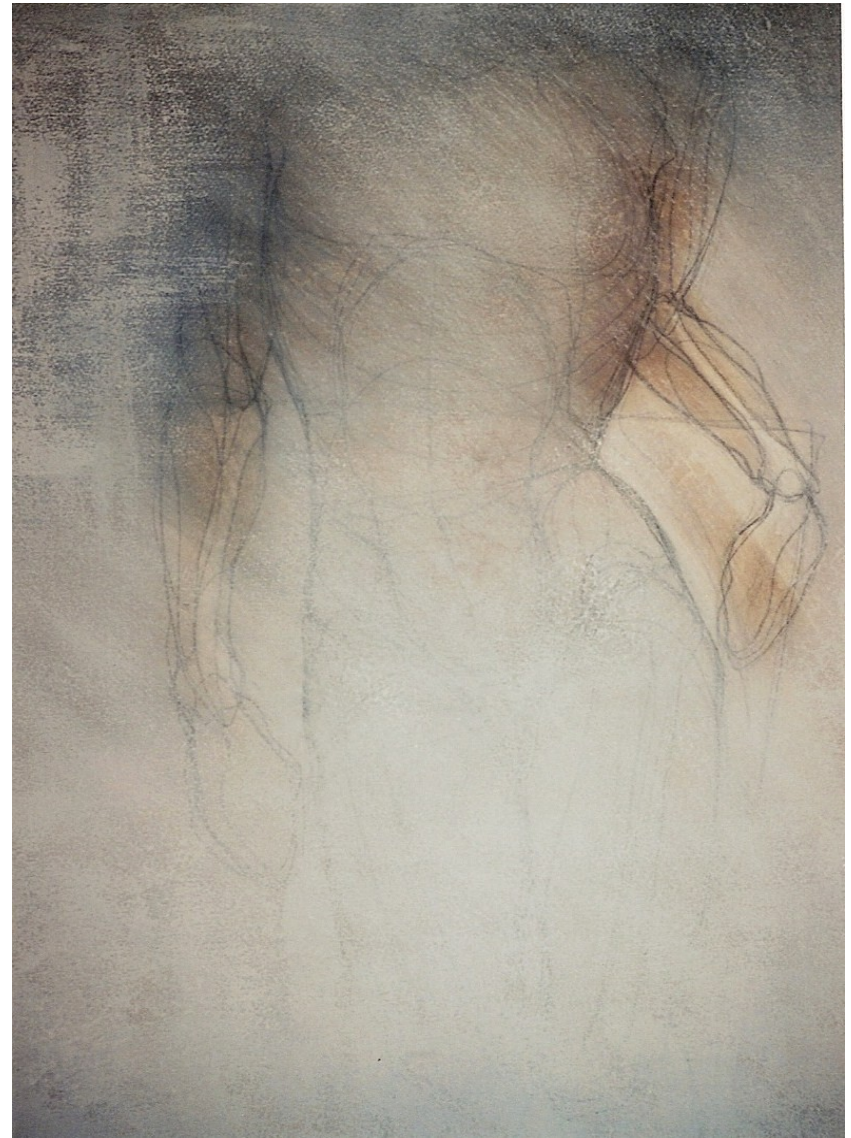


29. W32 - The Power of Drawing (detail)
Mixed media on Arches paper, 50 x 65, 1990



Figure projects

30. W70 – Touch
Conte crayon, pastel, acrylic on Arches paper, 50 x 65 cm, 1996



31. W59 - Homage to Howard Warshaw
Mixed media on Arches paper, 50 x 65 cm, 1995

Figure projects



32. W63 – Hands Mixed media on Arches, 50 x 65 cm, 1999



33. Odes-17
Mixed media on Arches paper, 50 x 65 cm, 1989

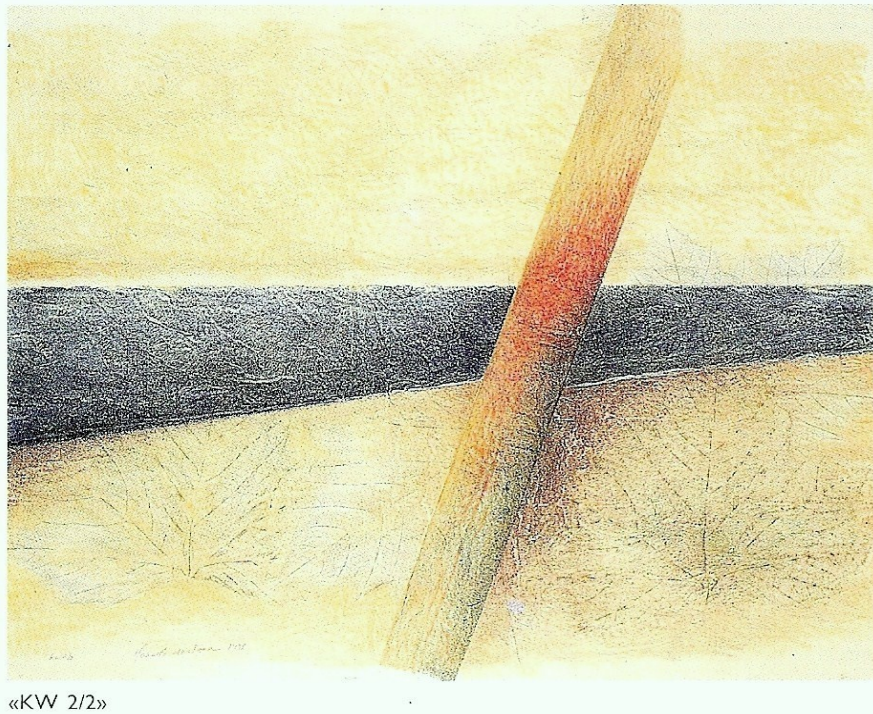


34. Reclining nude (A3)
Sanguine and acrylic on Canson paper, 50 x 65 cm, 1996

WORKS ON JAPANESE PAPER

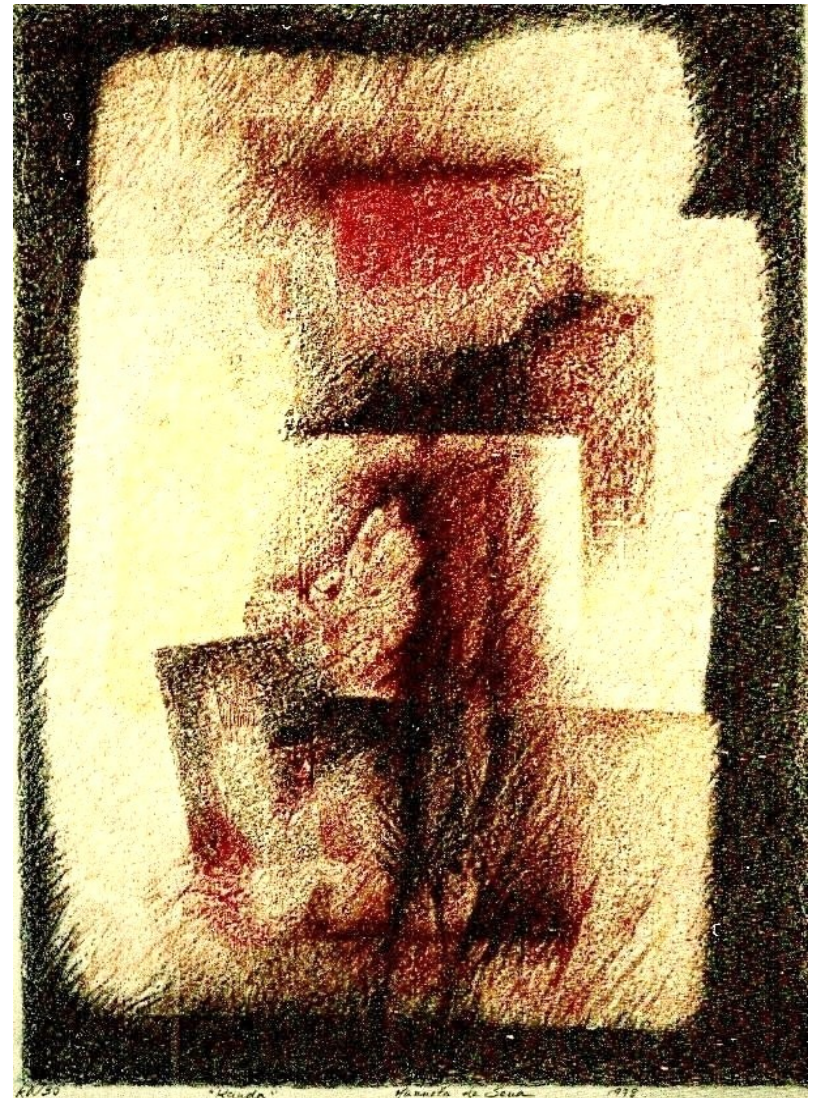
Project theme: A River Runs Through

Current project is a follow up on the theme.



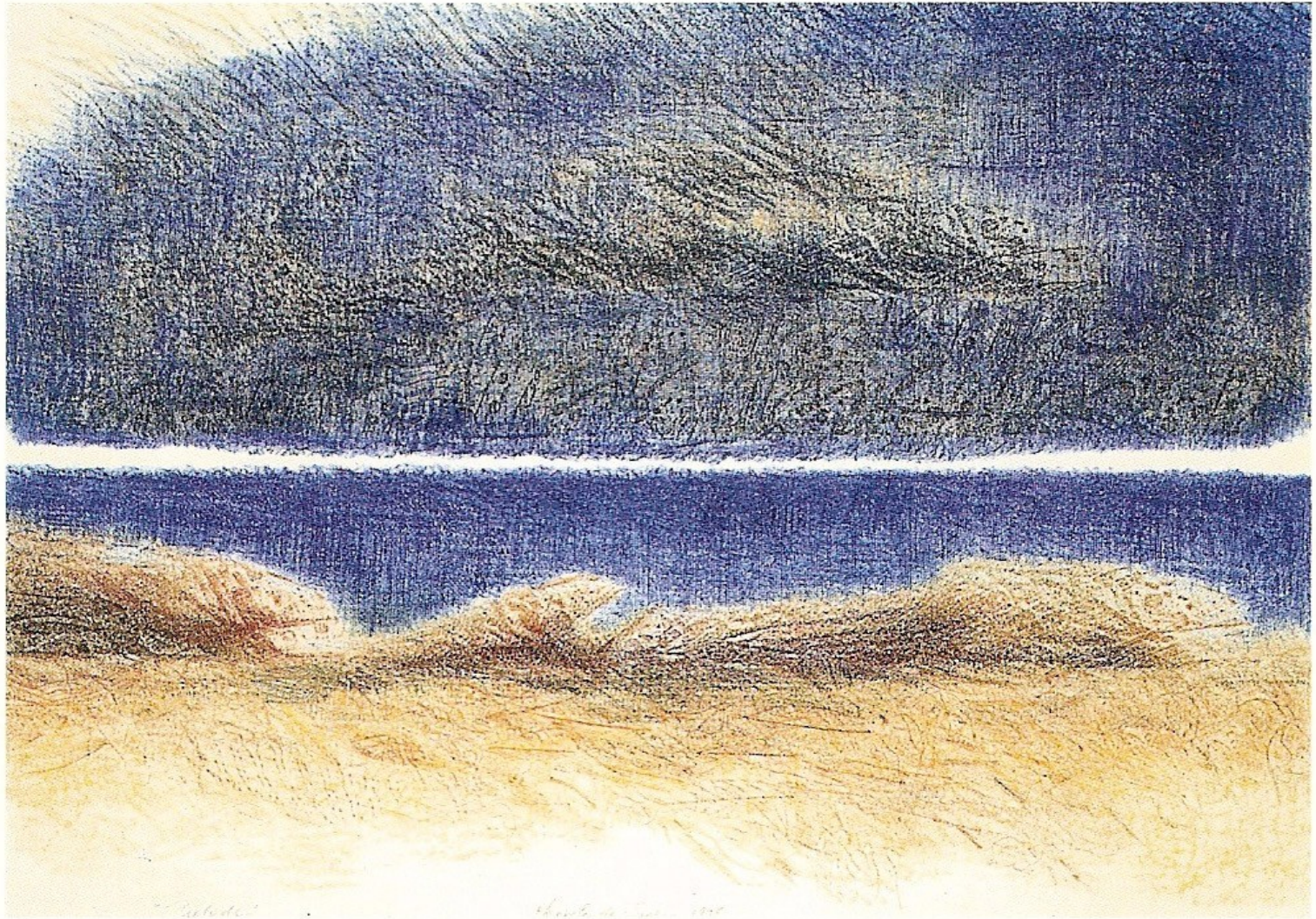
«KW 2/2»

35. KW2/2
Mono print on Mochi paper, 54 x 61 cm, 1998



36. KW30 – Kanda
Mono print on Mochizuki paper, 46 x 62 cm, 1998

Project theme: A River Runs Through



«PRELUDE»

37. KW19 Prelude (Salmon)

Mono print on Minomitre paper, 56 x 76 cm, 1998

M Sena