



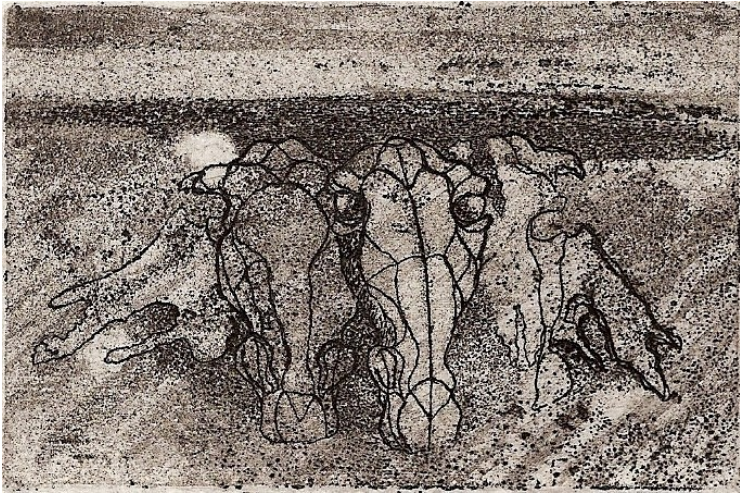
Manuela de Sena

# The EQUUS Project

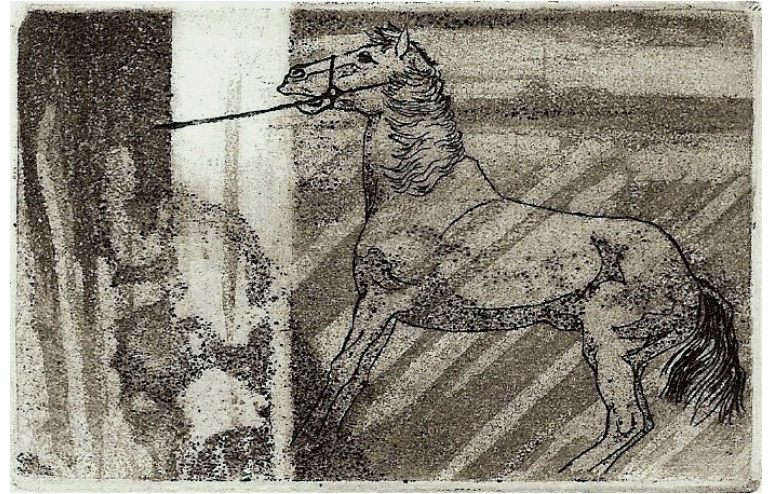
Prints and drawings

Email: [fapc\\_sena@yahoo.com](mailto:fapc_sena@yahoo.com)





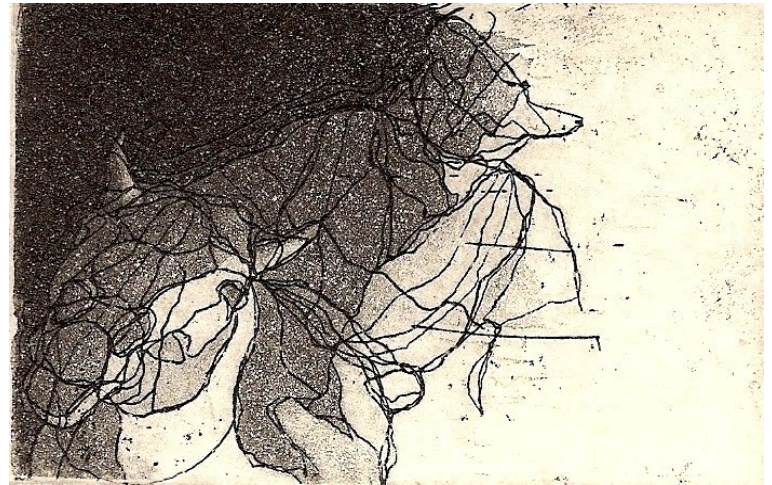
1. Heads, 1982. Etching on zinc metal, 6 x 9 cm.



2. "Shinkle, Shankle", 1982. Etching on zinc metal, 6 x 9 cm.

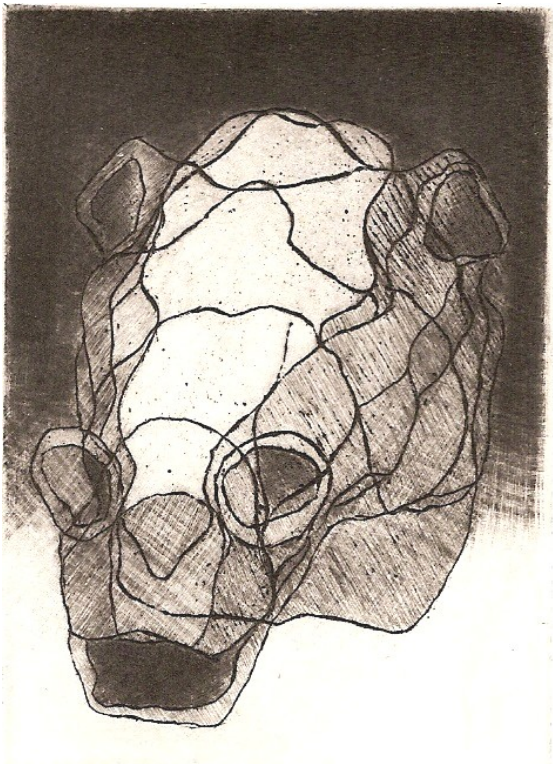


3. Desert riders, 1994. Etching and aquatint on zinc, 6 x 9 cm.



4. Two are one, 1994. Etching and aquatint on zinc, 6 x 9 cm.





5. Selene Head, 1982  
Mezzotint and etching  
on copper, plate 6 x 9 cm.



6. Apocalypse, 2000.  
Miniature etching on zinc,  
4,5 x 5,5 cm.



7. Cavaliers, 1994.  
Etching and aquatint on  
zinc metal, 6 x 9 cm.



8. Master, 2000.  
Miniature etching on zinc,  
4,5 x 5,5 cm.



9. Equus and the child, 1982.  
Etching on zinc, 6 x 11,5 cm.

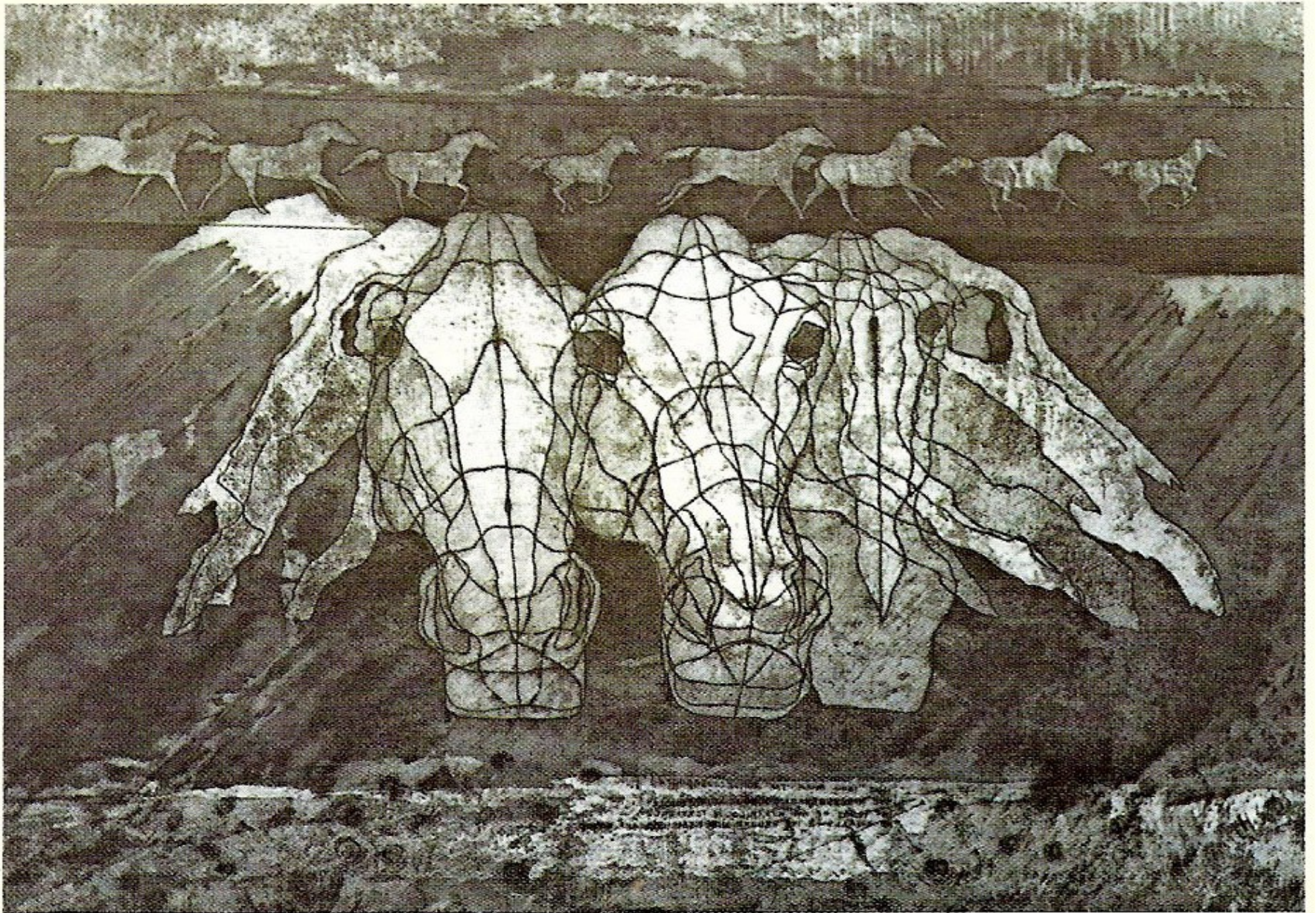


10. Cheppa, 1999.  
Etching on zinc, 7,5 x 11,5 cm.  
Commissioned print edition  
used as New Year's card.



11. Dawn, 2000.  
Etching and aquatint on zinc, 6 x 10,5 cm.





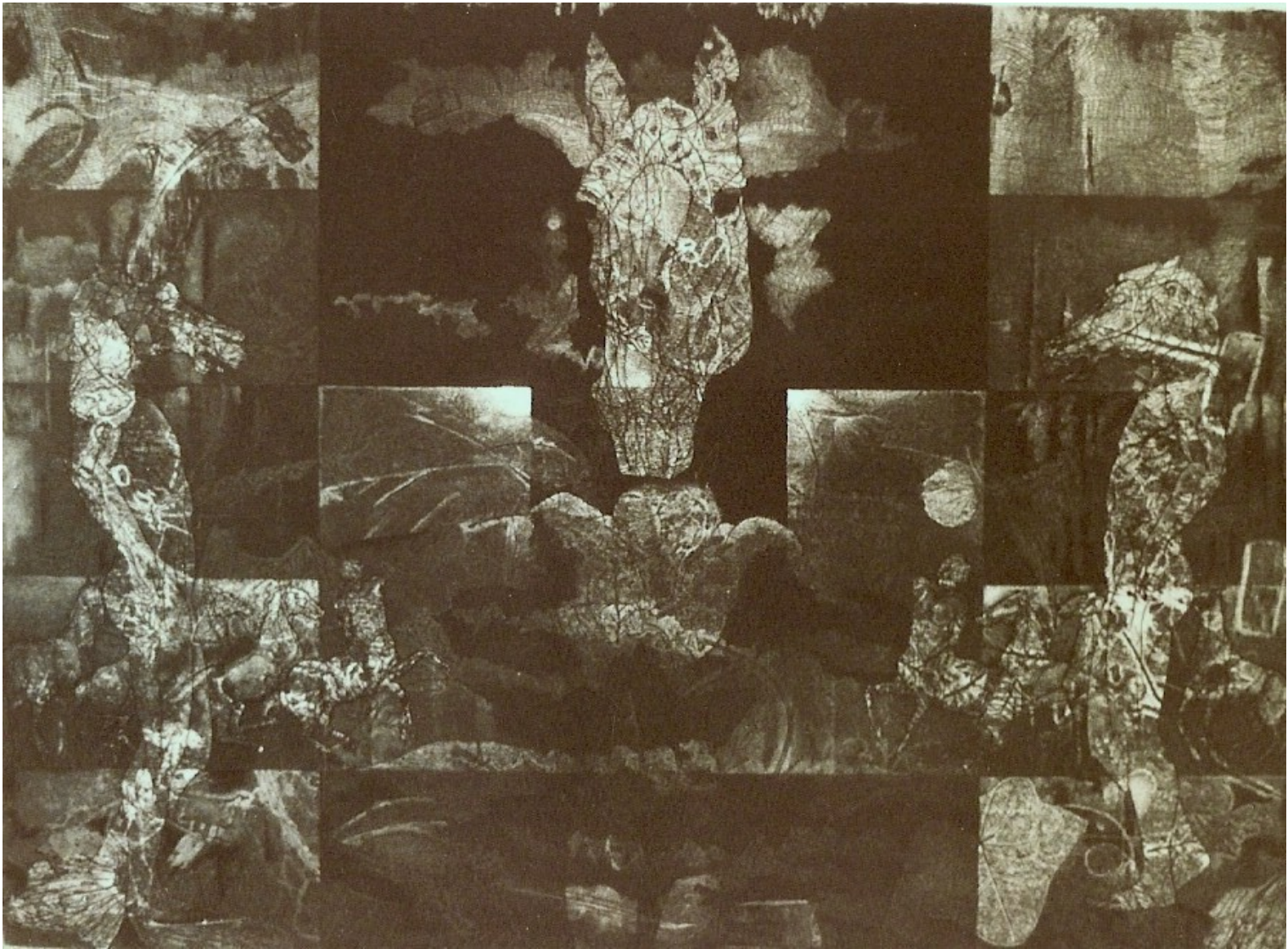
12. EQUUS – Hast thou given the horse strength?, 1982-1983. Etching, texture transfer on zinc metal plate, 50 x 65 cm





13. EQUUS – She speaks of love and I of horses, 1982-84. Line etching aquatint on zinc metal plate, 30 x 40 cm





14. EQUUS – He is your master, 1983-84. Line etching, aquatint and texture transfer on zinc metal plate, 30 x 40 cm.





15. EQUUS – Eyes, he is everywhere, 1984.  
Etching, aquatint, texture transfer on  
zinc plate, 50 x 65 cm





16. UCCELLO, 1986. Mixed media: conte-crayon, pastel, acrylic on Arches handmade paper, 50 x 65 cm. Private collection, Paris.





17. Bozkachi (1), 1987.  
Mixed media on Arches paper, 50 x 65 cm.



18. Bozkachi (3), 1987.  
Conte crayon, pastel on Arches paper, 50 x 65 cm.  
Private collection, Lisbon.



19. Pato III (Horseball), 1987.  
Mixed media on Arches paper, 50 x 65 cm.  
Private collection, Paris.

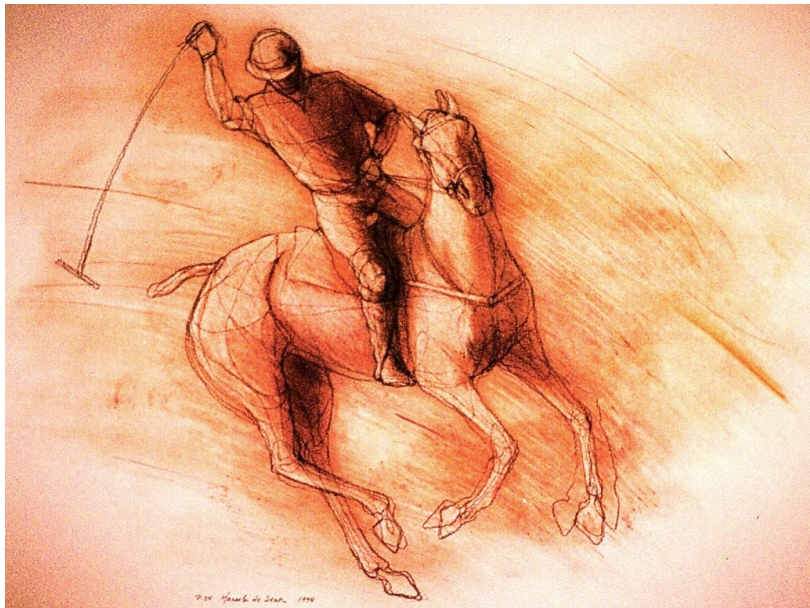




20. Polo n° 23, 1989.  
Mixed media drawing on Arches paper, 50 x 65 cm.



21. Polo n° 6, 1988.  
Mixed media drawing on Arches paper, 50 x 65 cm.  
Private collection, Paris.



22. Polo n° 34, 1994.  
Mixed media drawing on Arches paper, 50 x 65 cm.





23. Polo n° 29, 1991  
Mixed media on Arches paper, 56 x 76 cm.  
Private collection, Lisbon.

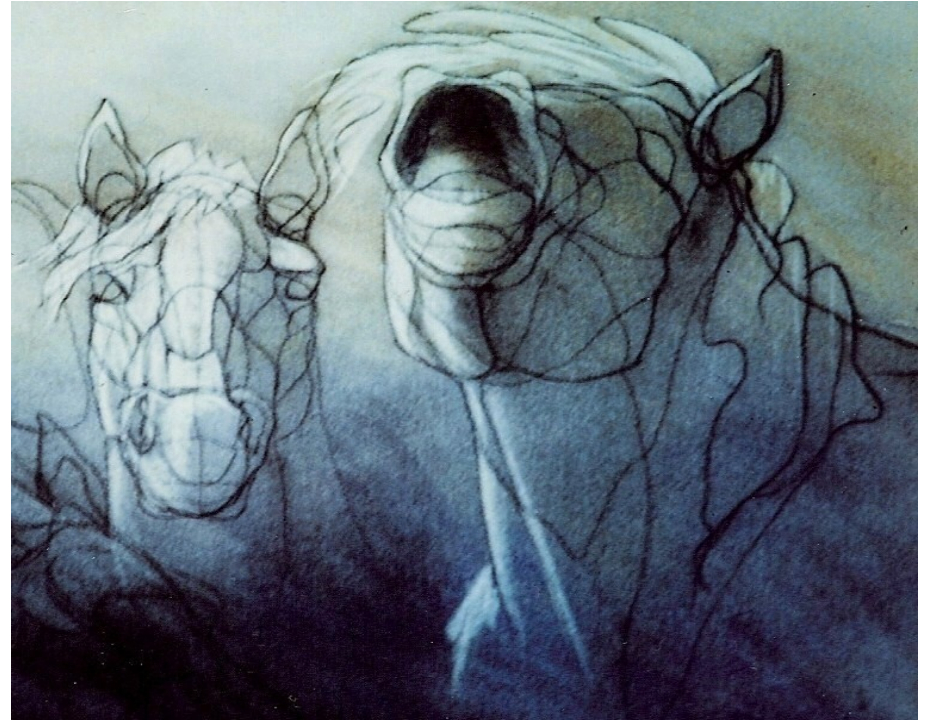


24. Polo n° 12, 1988.  
Mixed media on Arches paper, 56 x 76 cm.  
Private collection, Lisbon.





25. Golega – The rider, (P/H37), 1992.  
Conte crayon, pastel on Arches paper, 50 x 65 cm.  
Private collection, Portugal.



26. Morning on the farm, 1993.  
Mixed media on Arches paper, 50 x 65 cm.